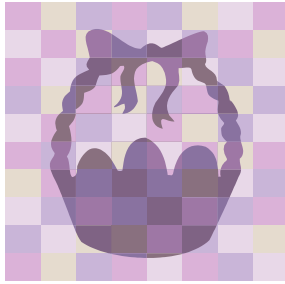


Scraps of Wisdom

Newsletter of the Waterloo County Quilters Guild

www.wcquiltersguild.on.ca



Program for April 20, 2011

Our speaker this month is Sandy Small Proudfoot.

Sandy began teaching quilting at Humber College in 1974 and in 1975 formed the second quilt guild in Canada, the Etobicoke Quilters Guild. In 1977, she co-convened the first Canadian Quilt Symposium held at York University in Toronto. In 1983 she entered the Ontario College of Art (now Art & Design) where she became a part-time mature student in the Design Department and graduated in 1989 with a diploma in design.

Her quilts and quilted clothing have won awards in Canada, the UK and the US. She continues to enter juried shows and sell her quilt patterns. *The Canadian Provincial Flower* pattern, was featured in the mid nineteen-eighties in Canadian Living magazine and has been a longtime favourite of quilters across Canada and a number of US quilters as well.

Our vendor this month is Reichards Quiltery, from St Jacobs

Dorothy Holdenmeyer and Nancy Winn

Your Program Co-ordinators

Doreen Bone

President's Message



It's that time of year when I don't need an alarm clock. The last few days the birds have woken me up. I love their singing. A sure sign spring is on the way.

Did anyone count their UFO's? Take a few minutes or longer to do your counting and we'll compare numbers at our April meeting. That should be fun. I'll come up with a prize for the most UFO's and a little something for members who donate a UFO for another member to complete and keep.

Inside this issue:

	Page
Program	1
President's Message	1, 2
Calls for Entry	2
Mannheim	2
Membership	2
Relief Sale	3
Plowing Match	3
Quilt Show Boutique	3
Bus Trip	6
Quilt Show	4,5
Quilt Festival	5
Small Quilt Draw	6
April Workshop	6
Scrap Bank, Alzheimer	7
Quilting Time	7
On the Calendar	9,10,11
Executive	11

Reminder of Meeting Times:

1:30—3:30 (doors open @ 12:45)

7:30—9:30 (doors open @ 6:40)

Meeting Checklist

- Your nametag/lanyard
- Show and Tell
- Smile/Memory/Alzheimer Quilts
- Zehrs tapes
- Books/magazines to donate to the Library
- Boutique items
- 6" Show Magnet Squares

President's Message (cont.)

Enjoy the weather and I'll see you in April.

Chocolate tip for April:

Money talks, Chocolate sings.

Doreen



Calls for Entry

- Joseph Schneider Haus 519-742-7752 "Memories in Black and White" 2011 Quilt Block Contest. The deadline is April 15, 2011.
- Trend-TEX Challenge May, 2011 London Ontario - Forms/information: www.canadianquilter.com/pdf/2011-trend-tex-quilters-challenge-kits.pdf
- Upper Canada Village 50th Anniversary Challenge. Entry deadline July 15, 2011. Info: www.uppercanadavillage.com 1-800-437-2233

Mannheim Quilting Circle - Wed April 13, 9am to 4pm

It's Spring at Mannheim. No more bad weather to keep you from joining us. Behind in your project for the show? You can get it finished.

Bring your lunch/beverage/snacks. Fast food is a short drive away. Join the fun.

Fabia Joyce and Bernice Gammy

A Note From Membership

We are so pleased to welcome new members Jean Giesler and Margaret Hicks. Please take the time to give them a warm hello – they'll be the ones with the white badges. **Members, this year we will begin renewals for next year at the April meeting.** Happy Quilting!!

Your membership committee:

Cindy, Betty Anne, Kitty, Lyn, Pat, Joline and Marilyn

New Hamburg Mennonite Relief Sale

There will be the usual Quilt Previews at the following locations:

Kitchener City Hall Rotunda: April 27th - May 24th

Waterloo City Hall Atrium: May 2nd - May 25th

Joseph Schneider Haus: May 4th - May 26th

St. Jacobs Mennonite Church: May 24th - 27th "Quilts for the World"

New Hamburg Arena: Final Quilt Preview - Friday May 27th 6:00 p.m.- 9:00 p.m.

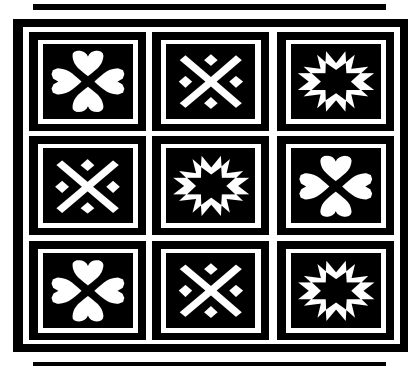
Quilt Auction - Saturday, May 28th 8:30 a.m.- mid afternoon

We are selling posters and cards this year, featuring "Plain & Fancy", the project coordinated by Renske Helmuth and involving many guild members, plus others. Posters are \$10.00 and cards \$3.00, available at the April meeting and until they are gone. They are very striking, so don't miss out, especially if you participated in the quilt.

Our guild will again be involved in the Quilting Bee at Joseph Schneider Haus, from Monday, May 23 (Victoria Day) - Wednesday, May 25th. We need a finished quilt top which is marked and ready for hand quilting - one that is large enough to keep us busy for 3 days. The "Friends of JSH" provide snacks and a delicious lunch. Some quilters work for the morning (9 - 12), then eat lunch, others come for lunch and then quilt for the afternoon (1 - 4), and some enjoy it so much that they stay all day!

A quilt has now been selected to work on.

Emily Hunsberger



Quilt Show Boutique 2011

Many wonderful items were dropped off at the table that is set up by the back door. Please take the time to visit the table to get ideas and pick up a pattern if you need one. If you have an idea but need help making the items please let us know. Our Guild website has patterns on it under 'Quilt Show'.

If you need anything please call Doreen Bone or Judy Pearce.



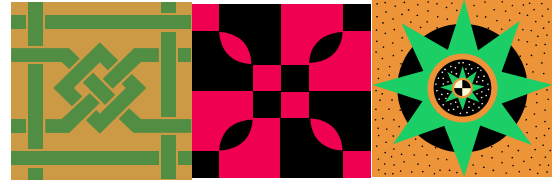
The International Plowing Match

is being held in Roseville in September 2012. Mary Wiedner and Nita Timm have entry forms and fabric for the Block Challenge available for anyone who wishes to enter. They also have brochures for anyone interested in entering the quilt competition for the match.

Web: www.ipm2012.ca

Quilt Show Rim Park

Sept 30 – Oct 1, 2011



There are about 6 months until the Quilt Show on September 30 and October 1, 2011 at RIM Park.

Many of you are making beautiful things for the boutique, the small quilt draw or silent auction, as well as all of the lovely quilt items to be displayed at our Show. The quality and quantity continue to astound me. Thank you so much for your wonderful generosity and continued support in this endeavour. Colleen Robertson has entry forms available at each Guild meeting. You may want to download the entry form from our website or fill it out online, but remember that you need the entry form, story card and a digital photo of at least the quilt top for each entry by June 15, 2011, at the AGM. We will be contacting everyone for a photo of your finished entry for the CD probably in August, to be taken at Creative Sisters. They have a new system that will enable the quilt to be hung and photographed correctly and quickly. The flyers, posters and magnets are now available for you to take with you when you go to other shows or shops. Jan Hember and Bonnie Murdoch have the packages for you at each meeting or call them if you need materials between meetings. Keep making the magnets.

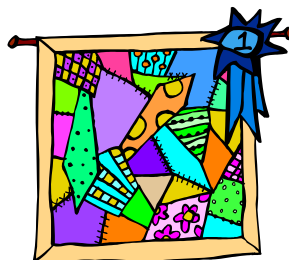
Raffle tickets were handed out at our March meetings. If you don't have yours yet, see Joan Doke or Joline Freund at the April meetings. Those who have not picked up their ticket packets of 20 will be mailed to them. Each packet has twenty tickets to sell along with a picture of the 2 raffle quilts. We will have extra tickets should you wish more. We will be selling tickets during most of the summer Saturdays at the market so consider signing up for a 2 hour opportunity.

Meetings with the people at RIM Park are going well. We are hoping to make better use of our volunteer room this year. We are also encouraged by a change in the catering process at RIM Park. We may yet have a tea room. Nothing definitive yet, but we are hopeful.

We still need a volunteer coordinator, someone for library displays and an admissions coordinator. Please consider being a part of this great venture.

We are beginning advertising for the Quilt Show booklet. If you wish to advertise or know of someone who might be interested, please let either Colleen Robertson or Marg Cassel know.

Keep quilting.



Quilt Show (con't)

Quilt Sleeve Instructions

- Cut width of sleeve fabric 6" or 9" (small hanging / bed quilt size) - use fabric that matches or coordinates with the backing fabric
- Cut length the same as the finished width of the quilt
- Do a double turn under on the short ends - ¼" turn under will make the sleeve ½" shorter at each end of the finished quilt OR a ½" turn under will make the sleeve 1" shorter on each end - this will be your preference - and it may depend on how you are attaching the rod to the wall for hanging
- Sew long seam with wrong sides together so the seam ends up on the right side of sleeve tube (1/4 inch seam) press seam open and press tube so seam ends up in middle of tube (the seam will be placed next to the quilt back)
- Hand sew sleeve FLAT to the top of the quilt (NOT Pleated)
Bev cuts a sleeve for all her bed quilts - so it is always ready to be hung up
I like doing a sleeve with a separation in the middle - this allows for small quilts to be hung on a single nail in the wall



Support our Local Quilt Festival - Quilt and Fibre Art Festival - Waterloo Region and Beyond - May 24 - 28, 2011

16 Events in 6 Communities - St Jacobs, Kitchener/Waterloo, Cambridge, Shakespeare, New Hamburg and Quilt Stores. Quilting is an integral part of this region's heritage, so it is fitting that we're known as "The Quilt Capital of Canada". The last week of May is the time when the communities come together to host a variety of exceptional quilting and fibre arts events. Web site www.stjacobs.com (under Festivals). Brochures at local quilt stores and our Guild information desk.



Trudy's Quilting Service
Trudy Dey
Edge to Edge & Custom
Long Arm Machine Quilting
Waterloo, ON.
519-888-6278
Email: trudy.dey@happydeys.ca

Fabrics & Quilts



Woodstock, Ontario

Ph. (519) 537-8753
515533 11th Line
R.R.#3 Woodstock, ON
N4S 7V7

www.countrypatchworks.ca

...Worth the Drive to the country!

Small Quilt Draw for the September Quilt Show

We are asking for donations of small quilts with the dimensions of 60 inches maximum as the perimeter. It can be less but not any larger. This is the time to perhaps use those orphan blocks, try a favourite pattern or a new one that you want to try. Some suggestions are: something for children's room or the baby's nursery, a quilt for a doll, a wall-hanging for a small space on a wall or perhaps something for the middle of a table.

We will sell tickets just at the show and proceeds will help pay for the expenses that the show will generate. We hope to have enough quilts to have a draw for both Friday and another set of small quilts for Saturday. I will be asking for them for September so you can be thinking about one while you are finishing up your big quilts for the show. Thank you for considering doing one for this show.

Bonnie Murdoch

April Workshop

At the April meeting, we will be offering sign-ups for our April workshop. The topic is "An Introduction to Colour Theory", presented by Sandy Small-Proudfoot. The date is April 30, 2011 and the cost per person is \$30. Space is limited to 20 people.

Bus Trip May 28, 2011 to Quilt Ontario

I have organized a school bus for Saturday May 28, 2011 to attend the Quilt Ontario conference held this year in London, on the beautiful grounds of the University of Western Ontario. It will cost \$20 per person if 30 people go, \$15 per person if 40 people go - so according to the number of people on the bus it may cost a bit more or less. Lunch will NOT be provided since the group will be dispersed throughout the conference and I am assuming that food will be available for sale at the conference. As usual we will leave from the Albert McCormick Arena at 7:30 am and plan to return by 6:00 pm that same day to the Arena. Although we may not take in workshops, there will be plenty to see during the day. We will be able to take in the Merchant Mall and many of the exhibits. *I will have sign-up sheets at the April and May meetings, so plan to get your name in early as this promises to be a fun day.*

Colleen Robertson



CELEBRATING 25 YEARS

THE PLACE to purchase

ALL your quilting supplies

Batiks, Asian, Thirties,

Black & White

100's of Books & More

3991 Perth Rd 107, Shakespeare

(South of the lights)

A Short 30 min. from K-W

519-625-8435

heather@thequiltplace.ca

www.thequiltplace.ca

Mon. to Sat. 10-5:30

Scrap Bank and Alzheimer Fabric

The scrap bank has now been organized into two bins - cottons and flannelette. Please try to place your fabric in the correct bins so it looks a little neater. Thanks to Kathy Langill.

NO MORE FABRIC NEEDED FOR THE TOUCH QUILT PROJECT

First of all a big thanks to all who have donated fabric to the Alzheimer's Touch Quilt Project. As this project was just getting off to a start they certainly appreciated all the fabric that we donated.

They are now overstocked and do not need any more fabric. I know it is hard to believe anyone could have too much fabric but it is true in this case.

They are still in need of more Touch Quilts and kits are available at Guild meetings (on a table at the back of the room). You can also pick up a kit at many of our local fabric shops or at the Alzheimer's Society in Kitchener. They are located at 831 Frederick Street, Kitchener.

Bernice Gammy

Quilting Time Together

Join us for a fun day of quilting on Saturday April 16, 2011

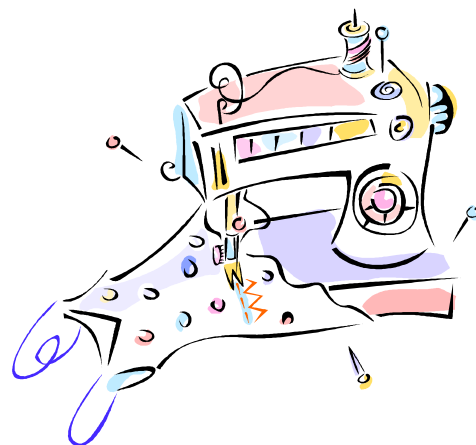
Where: Emmanuel United Church, 22 Bridgeport Rd Waterloo (Albert & Bridgeport Rd)

Time: 8:30 am to 8:30 pm

Cost \$25.00 includes a light lunch and a chicken supper

Limit of 40 people. Bring your sewing machine/fabric/small cutting board/smiles :-)

Spaces still available. Please email Fabia Joyce: fabia_steve@rogers.com (no phone calls - I am out of town). Phone contact is Marg Cassel 519-662-4587



Flare Fabrics
BATIKS AND BOLD COTTONS

www.flarefabrics.ca

Marlene Starkman
marlene@flarefabrics.ca
1-888-97-FLARE (973-5273)



Free shipping
in Canada!



Ye Olde Fabric Shoppe

Over 2000 bolts of exquisite designer quilting fabrics to browse.

Large variety of kits, books, patterns and notions.

Register online for our Friday Freebie Offers

327 Erie St., Stratford, ON, N5A 2N1 519-273-5773
www.yeoldefabricshoppe.com yeoldefabricshoppe@rogers.com

Monday to Friday, 10-5; Saturday 9-4

519-584-2130

321 Lancaster St. W.

Kitchener, ON N2H 4V4

creativesisters@bellnet.ca

www.creativesisters.ca



Batiks
Coordinates
Custom Machine Quilting
Wide Backings
Orientals

Full Moon Frenzy

Join us every full moon for **25% off all regular price fabrics & 15% off all other regular price items.**

Extended hours on weekday frenzies.



REICHARD'S
THE QUILTER'S STORE

4 Hachborn St,

St Jacobs.

519 664 3307

Mon-Sat. 9.30-5pm

Open Sunday 12-5 starting April

Show your guild card for a 10% discount



A Stitch In Time
Long Arm Quilting

- ♦ Professional Quality - Pantos, Freehand, Edge-to-Edge and Custom Quilting
- ♦ Affordable Prices
- ♦ Fast Turnaround

Heather McDermott

519-954-0243

www.astitchintimemq.com



Quilters Dream

700 Guelph Line, Burlington, ON

Phone: 905-681-8164

Burlington and area exclusive dealer of **PFAFF** sewing machines

Fabrics/Notions Quilting Classes Embroidery Classes
Sewing Classes Machine Quilting Giftware
Sewing Machine Repair Classroom Rental Finished Quilts
Travel Services

On the Calendar

March 9 - April 9, 2011	Wings, Feathers, Flowers & Boquets by Nancy Wells Greenwood Quiltery Gallery 275 Woolwich St Guelph ON 866-364-2790 www.greenwoodquiltery.com
March 19 - May 15, 2011	Full Circle – Art Quilts by Lyn Gowan Homer Watson House & Gallery Information contact 519 748-4377
March 20 – April 24, 2011	Devon House Craft Council Gallery Textile Art Exhibition: Rare Reflections 59 Duckworth St, St. John's, NL Contact: Hilary Rice (709) 634-5313
Until May 1, 2011	Kai Chan: A Spider's Logic & Beauty Born of Use: Natural Rainwear from China and Japan -The Textile Museum of Canada. Their permanent collection contains more than 12,000 artifacts and spans almost 2000 years and 200 world regions-fabrics, ceremonial cloths, garments, carpets & quilts. 55 Centre Ave. Toronto 416-599-5321 www.textilemuseum.ca Open daily 11-5 Wed 11-8.
April 15 - 16, 2011	The Royal City Quilters' Guild in Guelph -workshop and lecture with Becky Goldsmith of Piece O' Cake Designs The lecture will be at 7 pm Fri Apr 15, admissions is \$10 for guests, \$8 for RCQG members. The workshop will be Sat Apr 16 from 9 am to 3 pm, \$60 for non-members. Both events will be held at Three Willows United Church, 577 Willow Road, Guelph, ON www.royalcityquiltersguild.ca 519-837-0818.
April 11 - 16, 2011	Machine Quilters Expo Providence Rhode Island Special guest speaker: Charlotte Angotti www.mqxshow.com
April 16 & 17, 2011	Rayside Balfour Stitchery Guild Quilt Show Azilda Arena (Edgar Leclair Centre) Azilda, ON Quilt Appraiser Judy Lyons... Verbal \$25.00 Typewritten \$50.00 Appointments for Appraisals contact Darlene at 705-855-9431
April 15 - 17, 2011	Feelings in Fabric present Memories in Stitches Peterborough, Ontario Contact: Maureen O'Neill www.kwarthaquiltmakersguild.ca
April 15 & 16, 2011	Creative Sewing Festival International Centre, 6900 Airport Road, Mississauga, ON www.csnf.com 1-800-291-2030
April 16 & 17, 2011	Quilts North W.H. Collins Hall, 120 Hillside Drive N, Elliot Lake ON Contact: Joyce MacKenzie 705-848-1063
April 17 - 19, 2011	York Heritage Quilters Guild-Becky Goldsmith Workshops Info: workshops@yhqg.org
April 29 – May 1, 2011	Quilt Show & Sale Windsor, ON Contact: Pat Laing 519-733-5731 vivlac@gmail.com
April 30 – May 1, 2011	Region of York Quilters Guild Silver Threads Quilting Show Celebrating 25 Years of Quilting Together Newmarket Seniors Meeting Place, 474 Davis Drive, Newmarket, ON Contact: Carol Lypaczewski (905) 841-8250 www.regionofyorkquiltersguild.ca
May 2 – June 24, 2011	Seeing the Forest and the Trees: the Fibre Art Network Interprets the Journey Spencer Gallery in the D.B. Weldon Library, University of Western Ontario, London For information: Sharon Willas Rubuliak at sharonru@telus.net or tel 780-464-2690 www.fibreartnetwork.com

On the Calendar (Continued)

May 6 & 7, 2011	Thames Valley Quilters Guild Quilts in the Village Wesley Knox United Church, 91 Askin St. (Wortley Village) London, ON Contact: andrea.manias@sympatico.ca
May 12 – 15, 2011	Gathering Threads 2011 The Canadian Embroiderers' Guild London celebrating fibre and community for 40 years www.ceglondon.com or call 1-888-661-3545
May 14 & 15, 2011	Halton Quilters Guild Presents " Quilts in the Garden " Royal Botanical Gardens, Burlington, ON www.quiltsinthegardens.com
May 15 – Sept. 11, 2011	Joseph Schneider Haus Museum Grand National Quilt Show: Balancing Act 466 Queen St. S., Kitchener, ON Contact: Anne Marie 519 579-7752 grandnationalquiltshow@gmail.com
May 18 - 21, 2011	Niagara Heritage Quilter's Guild will be hosting " Quilts of Niagara ... A Symphony of Talents ". A medley of 400 quilts, a stunning raffle quilt, boutique items and quilts for sale. Mini demos, a Merchants Mall and a silent auction. Lectures on varied topics will be held twice daily with advance registration of \$3.00. On-site quilt appraisals with Judy Lyons are by appointment on Thursday only. The crescendo of the show a car quilt. Admission \$6.00 at the door or \$5.00 in advance. Niagara College Canada, 35 Taylor Rd, Niagara-on-the Lake ON LoS 1Jo For further information call Nina at 905 562 4859 or check our web site www.nhqq.ca
May 23 – 28, 2011	Quilts of the Netherlands Recreation Centre, Ailsa Craig, Ont. Daily info sessions, workshops with Dutch and Canadian Teachers, Tea Room, Merchants Mall www.ailsacraigquiltfestival.org
May 24 – 28, 2011	Quilt & Fibre Art Festival Waterloo Region and Beyond Takes place in and around St. Jacobs, Cambridge, Kitchener, Waterloo, Shakespeare and New Hamburg. Annual event www.stjacobs.com For more information 1-800-265-3353
May 24 - 28, 2011	Quilt Ontario at University of Western Ontario in London, Ontario www.canadianquilter.com/events/quilt-canada-2011-welcome.php
May 26 - 28, 2011	The Finishing Touch Quilt Show Canadian Machine Quilters Association Covent Garden Market-2nd level, 130 King St London ON Info Linda Robertson 519-356-2468 or lindamr@porchlight.ca
May 28 & 29, 2011	Quilted Treasures Lindsay Creative Quilters Guild, Lindsay Curling Club 18 Peel Street, Lindsay, ON Contact Anne: 705-324-7039. Show, raffle, tea room, vendors.
June 4 - 5, 2011	Quilting Corners , in Alliston. The show will be held at the Alliston Curling Club, 52 Albert St W. Our newsletter and full info about our show are available on our website, www.quiltingcorners.org . (look under the Members' Area).
Jun 17 – 18, 2011	Pine Tree Quilter's Guild of Muskoka is having our Quilt Show - 10am to 5pm at the Bracebridge Fairgrounds 331 Fraserburg Rd, Bracebridge ON. Admission is \$5.00 and it is wheelchair accessible-boutique-merchants mall -tea room www.pinetreequiltersguildofmuskoka.com
June 10 & 11, 2011	Abbotsford Quilters' Guild presents Quilts in the Valley at Tradex, Abbotsford Airport, BC Admission \$5.00 men free www.abbotsfordquilters.org 604-854-3806

On the Calendar (Continued)

July 10, 2011	<u>Doll and Quilt Show</u> Fish & Game Club, Elmwood Drive, Belleville Contact: Bev Lasher 613 966-8095
July 17 - 29, 2011	<u>Quilting By the Lake 2011</u> Onondaga Community College, Syracuse, NY - offering 31 quilting and fibre arts classes and workshops. www.quiltingbythelake.com
Aug 8 - 13, 2011	<u>The Quilts of Hawaii</u> London International Quilt Festival-workshops with Hawaiian Teachers-London Convention Centre, 300 York St. London ON 518-639-9473 www.cotton-by-post-com
Aug 12 - 14, 2011	Lanark County Quilters Guild presents <u>Quilts on the Tay</u> St. John Catholic High School, 2066 Scotch Line Rd, Perth ON Info: www.lanarkcountyquiltersguild.wordpress.com Adm. \$6.00
Aug 26 - 28, 2011	<u>Quilts in the Temple</u> Gwilliambury Quilt Guild, Sharon Temple, Sharon ON Info: www.sharontemple.com 905-478-2389

WCQG Executive 2010/2011

President

Doreen Bone

Vice President

Bonnie Murdoch

Treasurer

Lisa VanGalen

Secretary

Joan Doke

Past Presidents

Marilyn Hollinger Sandy Bussey

Standing Committees

Historian

Ruth Hicks

Librarians

Ruthanne Snider & Nicki Nawrot

Membership Chair

Cindy MacKay-Musso

Website

Kathleen Bissett

Newsletter Editor

Fabia Joyce

Program and Workshop Chairs

Dorothy Holdenmeyer & Nancy Winn

Quilt Show 2011 Chairs

Colleen Robertson and Marg Cassel

A note from your newsletter editor Fabia Joyce: Submissions may be subject to editing for grammar, spelling and content (handbook page 5 - *Scraps of Wisdom Newsletter*). Save trees - do not print unless necessary. To print without colour: select "Properties"; then select "Draft/fast/greyscale". Submissions for May newsletter due April 20. Send to fabia_steve@rogers.com.